



# Law Enforcement Leadership Initiative on Violence Against Women: Training & Technical Assistance

OVW ICJR Grantee Meeting, New Orleans  
November 2019

*This project is supported by Grant No. 2016-TA-AX-K055 awarded by the Office on Violence Against Women, U.S. Department of Justice. The opinions, finding, conclusions, and recommendations expressed here are those of the author(s) and do not necessarily reflect the views of the Department of Justice, Office on Violence Against Women.*

# International Association of Chiefs of Police

- More than 30,000 members in 160 countries
- Leader in global policing
- Committed to advancing safer communities through thoughtful, progressive police leadership
- Speaks out on behalf of law enforcement
- Advances leadership and professionalism in policing worldwide
- Partnership with OVW for more than 20 years

# International Association of Chiefs of Police

## OVW-Funded Projects:

- *Law Enforcement Leadership Initiative on Violence Against Women*
  - [www.theiacp.org/projects/national-law-enforcement-leadership-initiative-on-violence-against-women](http://www.theiacp.org/projects/national-law-enforcement-leadership-initiative-on-violence-against-women)
- Rural Law Enforcement Response to Violence Against Women
  - [www.theiacp.org/projects/training-program-on-enhancing-rural-law-enforcement-response-to-violence-against-women](http://www.theiacp.org/projects/training-program-on-enhancing-rural-law-enforcement-response-to-violence-against-women)
- Trauma Informed Sexual Assault Investigation Training
  - [www.theiacp.org/projects/trauma-informed-sexual-assault-investigation-training](http://www.theiacp.org/projects/trauma-informed-sexual-assault-investigation-training)
- Enhancing Community Trust: Proactive Approaches to Domestic and Sexual Violence
  - [www.theiacp.org/gender-bias](http://www.theiacp.org/gender-bias)

# Law Enforcement Leadership Initiative on Violence Against Women

- OVW comprehensive TTA provider on the law enforcement response to VAW crimes
- Develop and provide tools and support to:
  - Assist law enforcement in responding effectively to domestic and dating violence, sexual assault, stalking, and strangulation
  - Build the capacity of law enforcement to strengthen commitment to respond to these crimes

# Activity: Realities of Violence Against Women Crimes

# Lifetime Estimates of Violence

Within their lifetimes:

- 1/3 women & 1/4 men: experienced **intimate partner violence**
- 1/3 women & 1/6 men: experienced **sexual violence**
- 1/6 women & 1/19 men: experienced **stalking**

The National Intimate Partner and Sexual Violence Survey, 2010 Summary Report

# Definitions & Dynamics

## Small Group Activity:

- Gather in small groups and discuss the questions below for your assigned crime
  - Intimate partner violence, sexual assault, or stalking

- 1) Define the crime
- 2) What commonalities do you see across cases when responding to this crime?
- 3) What are some common offender behaviors?
- 4) What are some common victim responses?
- 5) What are some commonly held myths about this crime?
- 6) What are some challenges in working on and responding to these crimes?



# Large Group Questions

- What does the term "co-occurring crimes" mean?
- What types of co-occurring crimes/acts occur within the context of IPV, SA, and stalking?
- What are some reasons that co-occurring crimes are sometimes missed by law enforcement?
- Consider the impact of missing these crimes:
  - On victims
  - On offenders
  - On officers

# Power and Control = Criminal Behavior

- Emotional Abuse ..... Simple Assault
- Economic Abuse ..... Theft, Fraud, Forgery
- Using Children ..... Kidnapping, Neglect, Abuse
- Threats ..... Stalking, Harassment, Assault, Strangulation
- Using Male Privilege ..... Sexual Assault
- Intimidation ..... Vandalism, Animal Abuse, Destroying Property
- Isolation ..... False Imprisonment, Kidnapping, Custodial Interference
- Minimizing, Denying, Blaming ..... False Reports, Protection Order Violations

# Existing Resources: Police Response to Violence Against Women Online Resource Library

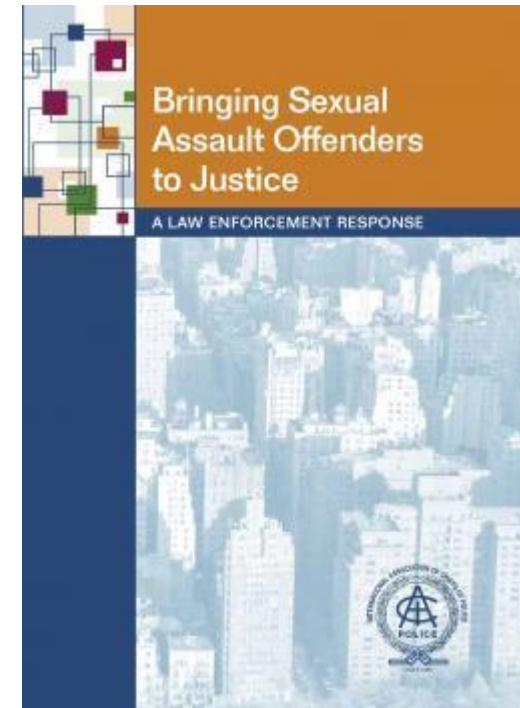
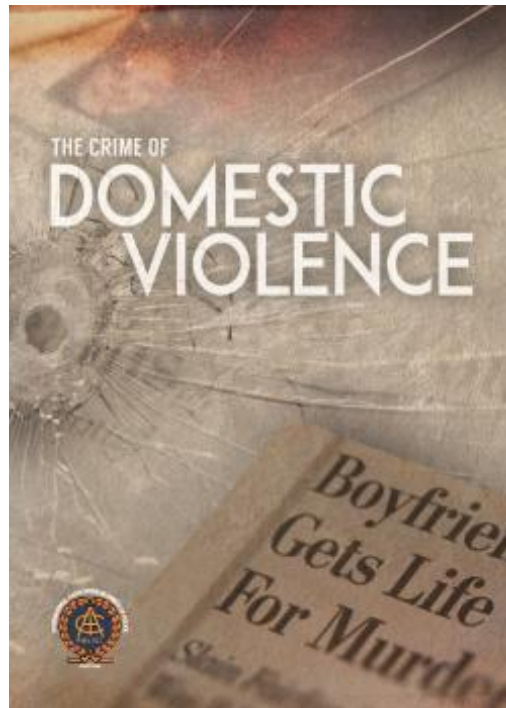
- Existing resources to improve the law enforcement response to VAW crimes of domestic and dating violence, sexual assault, stalking, strangulation, and human trafficking
- [www.theiacp.org/projects/police-response-to-violence-against-women-vaw](http://www.theiacp.org/projects/police-response-to-violence-against-women-vaw)

# Resource Library: Guidelines

- Addressing Sexual Offenses and Misconduct by Law Enforcement: Executive Guide
- Domestic Violence (Intimate Partner Violence) Response Policy and Training Content Guidelines
- Responding to Sexual Violence in LGBTQ+ Communities
- Sexual Assault Investigative Guidelines
  - Pocket Tip Card
  - Supplemental Report Form
- Sexual Assault Response Policy and Training Guidelines

# Resource Library: Roll Call Training Videos and Discussion Guides

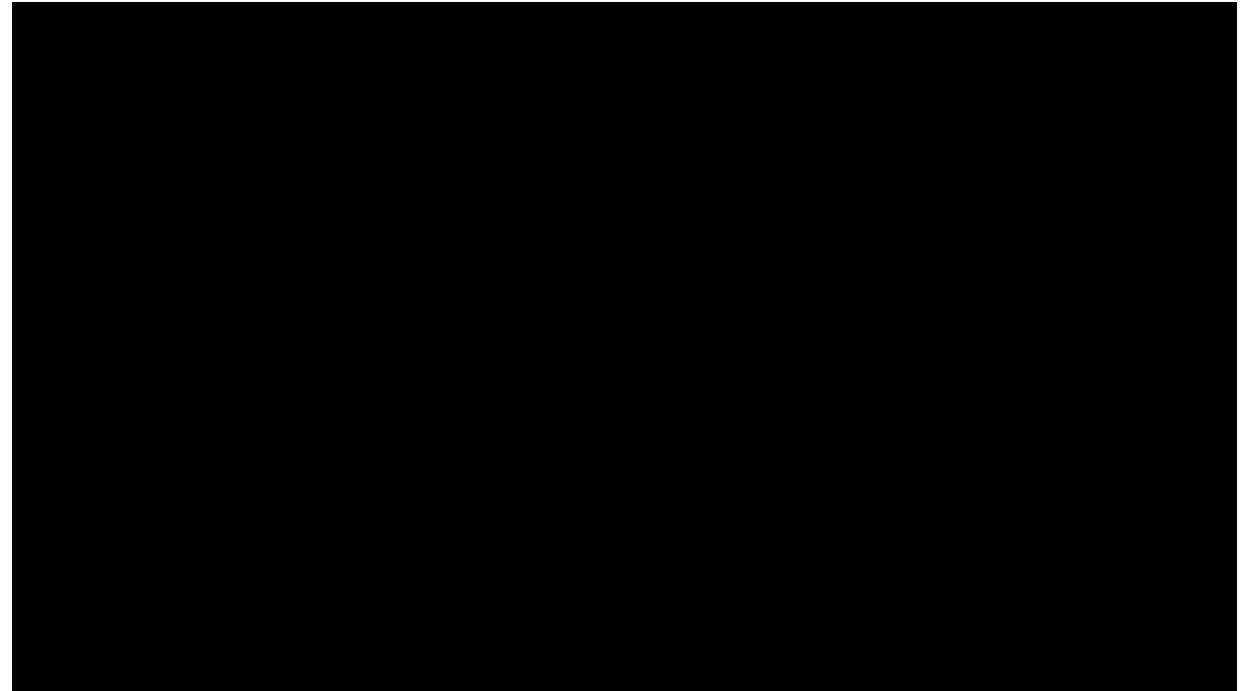
- Domestic Violence
- Human Trafficking
- Sexual Assault
- Elder Abuse



# Law Enforcement Training Video

## The Crime of Domestic Violence

- Segment 1: Critical Context
- Segment 2: On-Scene Response
- Segment 3: Offender Realities & Threats to Officers
- *Segment 4: Working Together*



# Resource Library: Webinar Recordings

- Balancing the Scales of Justice: Gender Bias in Domestic and Sexual Violence Investigations
- Officer Safety Considerations for Domestic Violence Calls
- Body-Worn Cameras:
  - Policy and Program Development
  - Victim Safety and Confidentiality
  - Vulnerable Populations and Community Trust

# Resource Library: Supervision

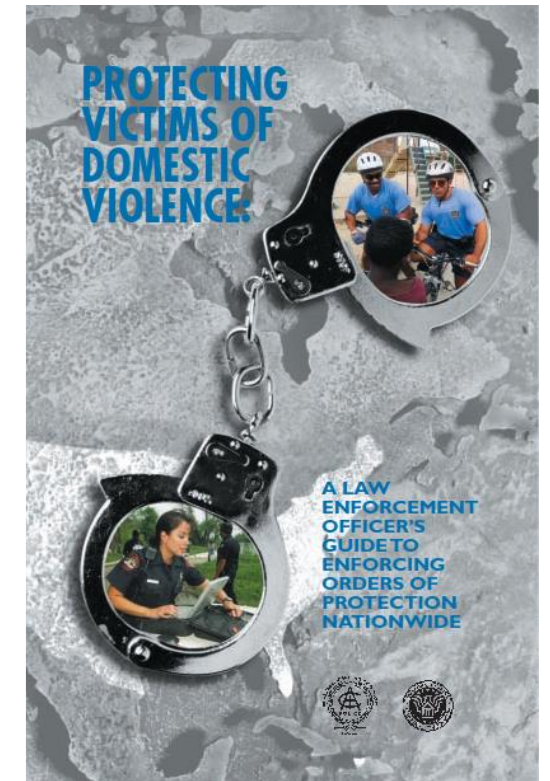
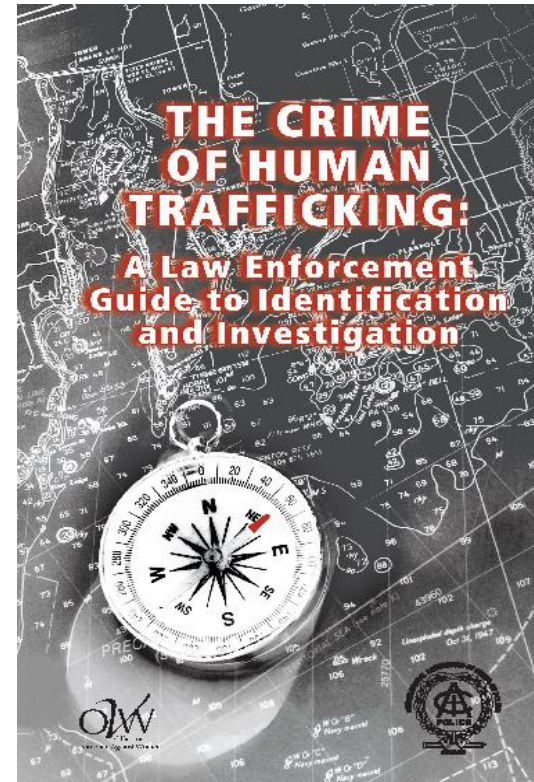
## Supervisor Report Review Checklists

- Response to Stalking
- Response to Sexual Assault
- Response to Domestic Violence
- Response to Non-Lethal Strangulation
- Response to Protection Order Violations



# Resource Library: Guidebooks

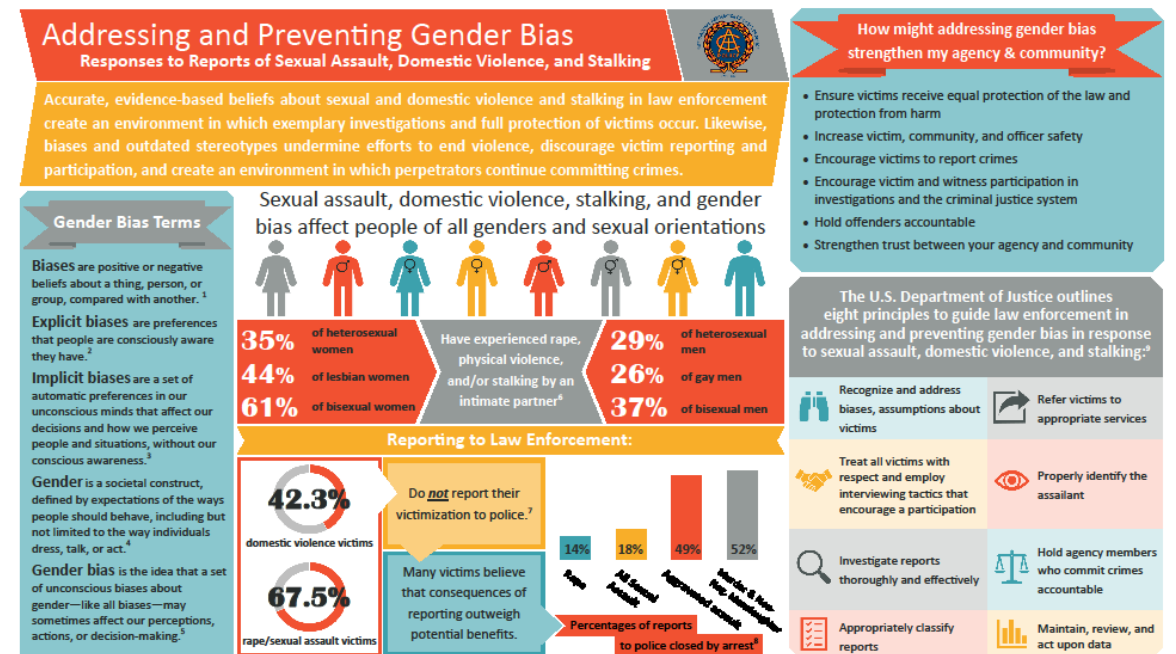
- The Crime of Human Trafficking
- Protecting Victims of Domestic Violence: A Law Enforcement Officer's Guide to Enforcing Orders of Protection Nationwide



# Resource Library: Additional Mediums

- Podcast: Domestic Violence Safety and Accountability Audit
- Podcast: Predominant Aggressor Determination
- Deliberations from the National Forum on Body-Worn Cameras and Violence Against Women

- Infographic on Identifying and Preventing Gender Bias



This document was produced by IACP under 2016-VF-GX-K024 awarded by the Office for Victims of Crime, Office of Justice Programs, U.S. Department of Justice. The opinions, findings, and conclusions or recommendations expressed in this document are those of the contributors and do not necessarily reflect the official position or policies of the Department of Justice. For additional information and citations, please visit [www.theiacp.org/Gender-bias](http://www.theiacp.org/Gender-bias)

# Resources: Victim Services and Support

- Law Enforcement's Role in Victim Compensation  
[www.theiacp.org/LE-Role-in-Victim-Compensation](http://www.theiacp.org/LE-Role-in-Victim-Compensation)
- Enhancing Law Enforcement Response to Victims (ELERV)  
[www.theiacp.org/projects/enhancing-law-enforcement-response-to-victims-elerv](http://www.theiacp.org/projects/enhancing-law-enforcement-response-to-victims-elerv)
- Law Enforcement-Based Direct Victim Services (LEV)  
[www.theiacp.org/projects/law-enforcement-based-direct-victim-services-lev](http://www.theiacp.org/projects/law-enforcement-based-direct-victim-services-lev)

# Upcoming Resources:

## Enhancing Community Trust: Proactive Approaches to Domestic and Sexual Violence

- Working with six law enforcement agencies to test and provide feedback on an agency self-assessment, a community assessment, and action-planning processes/tools designed to evaluate and implement effective responses to sexual violence, domestic violence, strangulation, and stalking

# Training Events

- Leadership Institute on Violence Against Women
- First-Line Supervisor Training on Violence Against Women
- Regional Training on Violence Against Women
- Trauma Informed Sexual Assault Investigations

# On-Site Technical Assistance

- Trainings tailored for specific law enforcement agency needs
- Policy review and development
- Protocol and procedure creation

# For More Information

[www.theiacp.org/projects/national-law-enforcement-leadership-initiative-on-violence-against-women](http://www.theiacp.org/projects/national-law-enforcement-leadership-initiative-on-violence-against-women)

Julia Holtemeyer, Project Manager

[holtemeyer@theiacp.org](mailto:holtemeyer@theiacp.org)

703-647-7272